

Commissioners of
IRISH LIGHTS

Navigation
and Maritime
Services



A Guide for Local Lighthouse Authorities



Commissioners of
IRISH LIGHTS

Navigation
and Maritime
Services

Harbour Road
Dun Laoghaire
Ireland
Contact:

www.irishlights.ie
+353 1 271 5400
mark.devlin@irishlights.ie
Mark Devlin, Local AtoN Inspector

Google Map Data © 2012 Google, Tele Atlas



Commissioners of Irish Lights

Irish Lights constitutes the General Lighthouse Authority (GLA) for the whole of Ireland, its adjacent seas and islands.

Irish Lights is responsible for the provision and maintenance of lighthouses, buoys, beacons, and radio aids to marine navigation to assist the safe and expeditious passage of all classes of mariners in general navigation and has a duty of superintendence and management for all local Aids to Navigation.

Local Lighthouse Authorities

Local Lighthouse Authorities (LLA) have authority over Local aids to navigation (AtoN) in their area and typically they are Harbour Authorities or County Councils. Local AtoN may be provided by the LLA themselves or by other bodies or individuals. The provider has responsibility for the provision and maintenance of the AtoN.

Local Aids to Navigation

The general navigation remit under which Irish Lights provide AtoN does not extend to individual approaches to ports or harbours. AtoN provided in such areas are termed Local Aids to Navigation. Regardless of who provides the AtoN, the quality of service to the mariner should be the same and the provision of such AtoN is regulated by Merchant Shipping and Ports legislation. The duties of LLA in Northern Ireland are set out in detail in the Port Marine Safety Code.

Local AtoN may be provided by local responsible bodies or individuals under a LLA. AtoN include lighthouses, radio aids, buoys, beacons, poles, signs and any other aid intended to assist safe navigation.

The Role of Irish Lights in Relation to Local Aids

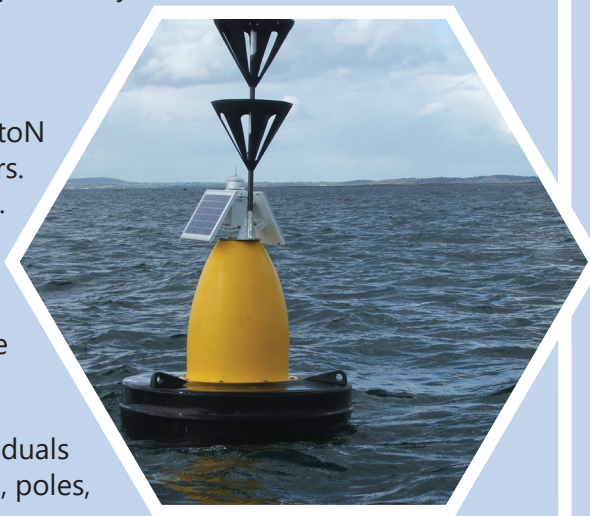
Under the Merchant Shipping Acts (RoI and NI) and the Port Marine Safety Code (NI), Irish Lights is the authority responsible for the management and superintendence of all AtoN. Irish Lights is required to inspect Local AtoN and report the result of those inspections to the relevant Government Minister. AtoN cannot be established, altered or removed without prior consent from Irish Lights.

Maintenance of Records

In general, the manner in which records are maintained is a matter for the provider or LLA. However, certain information is required including: procedures for responding to outages, details of each AtoN, records of failures and repair time, average performance over the last three years and the IALA categorisation. Details of the performance and availability of LLA AtoN must be returned to Irish Lights on a quarterly basis.

Other Benefits

Maintenance of a Safety Management System (SMS) for LLA AtoN is important, both as a support for safe navigation and as a demonstration of due care. Irish Lights inspection and audit provides a valuable objective assessment of the performance and adequacy of the AtoN management system.



Port Marine Safety Code Northern Ireland

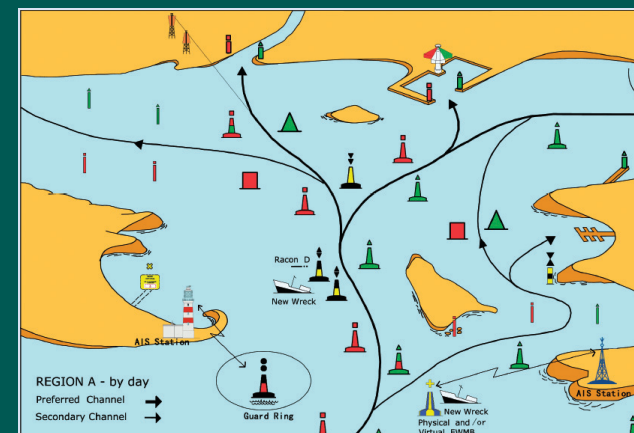
The Port Marine Safety Code applies to Ports and LLA. Both the Code and the associated Good Practice Guide confirm the requirement to maintain AtoN in accordance with a SMS. The SMS must provide for regular assessment of navigational requirements as well as provision and maintenance of AtoN, performance recording and quarterly reporting to the GLA.

Statutory Sanction

Under the Merchant Shipping Acts, consent from Irish Lights in the form of Statutory Sanction is required prior to the establishment, alteration, or removal of any AtoN. Application forms are available from Irish Lights (www.irishlights.ie). Prior consultation with Irish Lights can help expedite the Statutory Sanction process.

Local AtoN Provider Responsibility

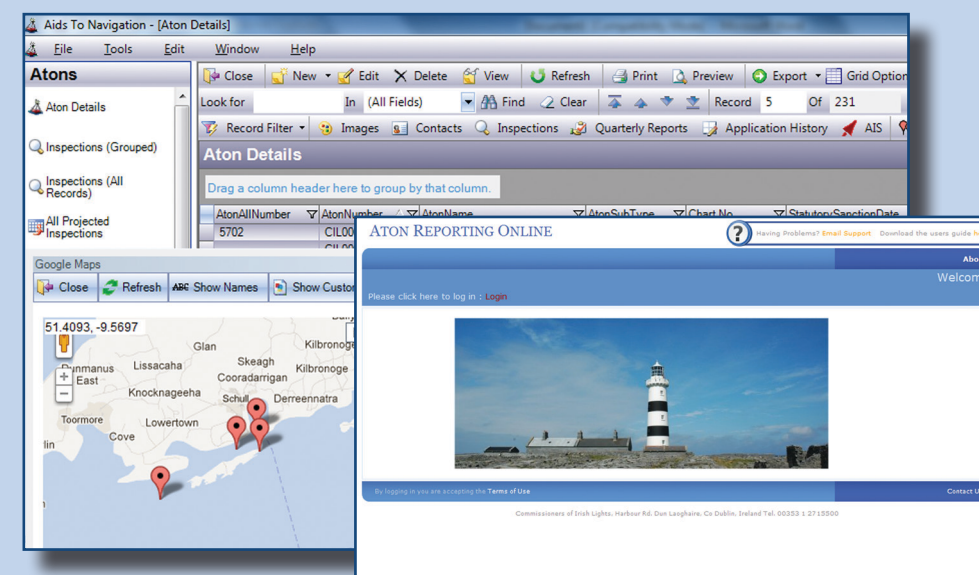
Providers of Local AtoN are responsible for ensuring they have statutory sanction prior to the establishment, alteration or removal of an AtoN. AtoN provided must meet IALA standards of presentation and availability. The maintenance of the AtoN is the responsibility of the provider.



IALA Maritime Buoyage System (Region A)

AtoN Management System

Irish Lights has developed an integrated AtoN Management System to assist in the inspection process and the reporting and recording of all data relevant to Local AtoN. LLA have access to an on-line portal which allows availability reporting, Statutory Sanction applications and the production of availability reports by AtoN or IALA Category. For further information contact the Local AtoN Inspector.



LLA Responsibilities

LLA are responsible for assessing the navigational requirements within their jurisdiction. Applications for Statutory Sanction for 3rd Party Local AtoN must be submitted via the appropriate LLA. LLA are required to submit quarterly availability reports to Irish Lights on the availability of their AtoN and where an LLA provides the AtoN, they have the additional responsibilities of providers (see below).

AtoN Categorisation

The categorisation of AtoN is the responsibility of the LLA. AtoN are identified as IALA Category 1, 2 or 3 depending on their significance from a safe navigation perspective. Factors determining the appropriate category include: degree of risk, importance of AtoN, local mix of AtoN, accessibility and local conditions.

The following availability targets apply:
Category 1 = 99.8% availability *
Category 2 = 99.0% availability *
Category 3 = 97.0% availability *

*Measured on a 3 year rolling average.