

Navigating to 2050

A safe and sustainable maritime future

#NavigatingTo2050



Maja Markovčić Kostelac

Executive Director
European Maritime Safety Agency



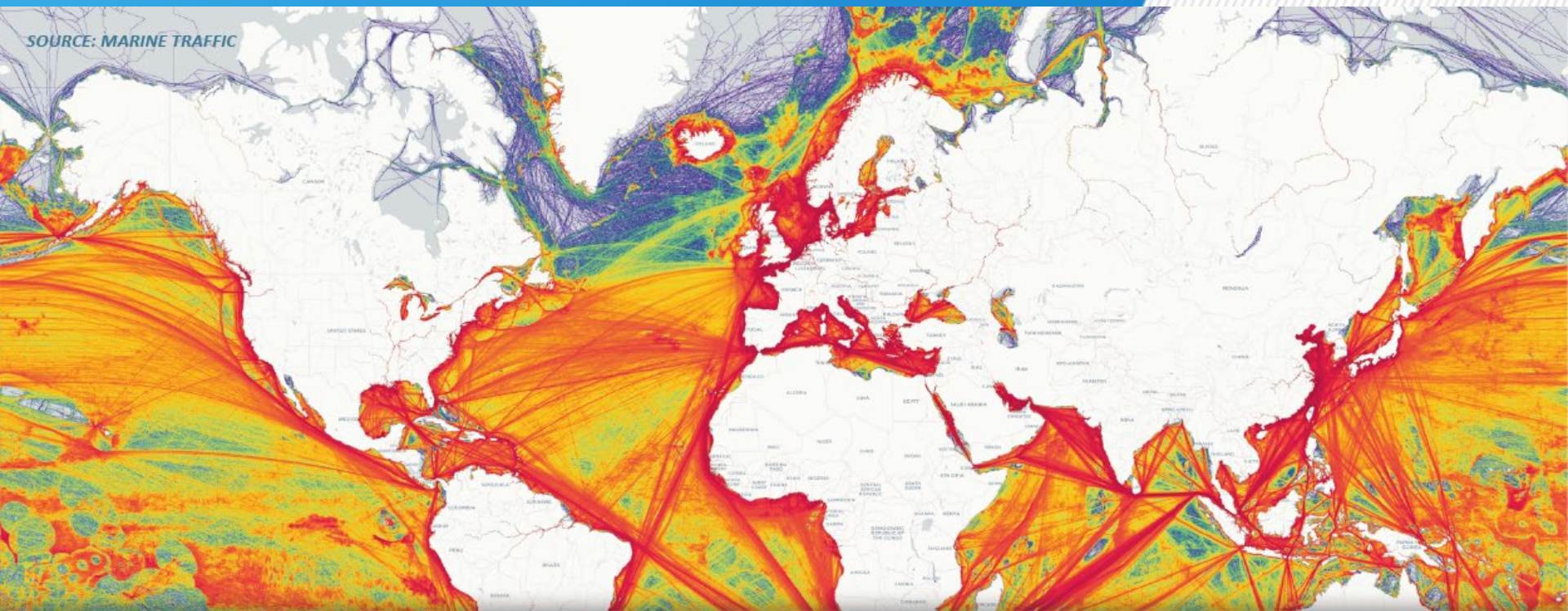
Commissioners of
IRISH LIGHTS

Navigation
and Maritime
Services

Ensuring the Resilience of Future Shipping

Maja Markovčić Kostelac / Executive Director
Conference Maritime Ireland 2050/ 15 November 2022,
Dublin

SOURCE: MARINE TRAFFIC



16%

WORLD IMPORTS AND EXPORTS

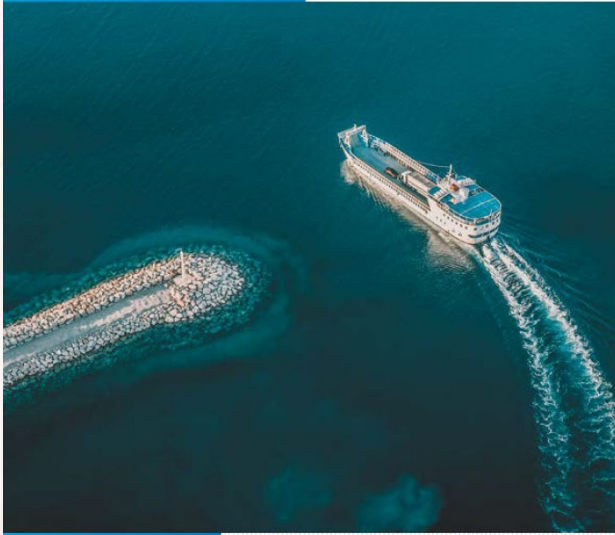


1.7 billion tonnes
OF IMPORTS AND EXPORTS
THROUGH EU PORTS IN 2020

230 million
PASSENGERS
IN EU PORTS IN 2020

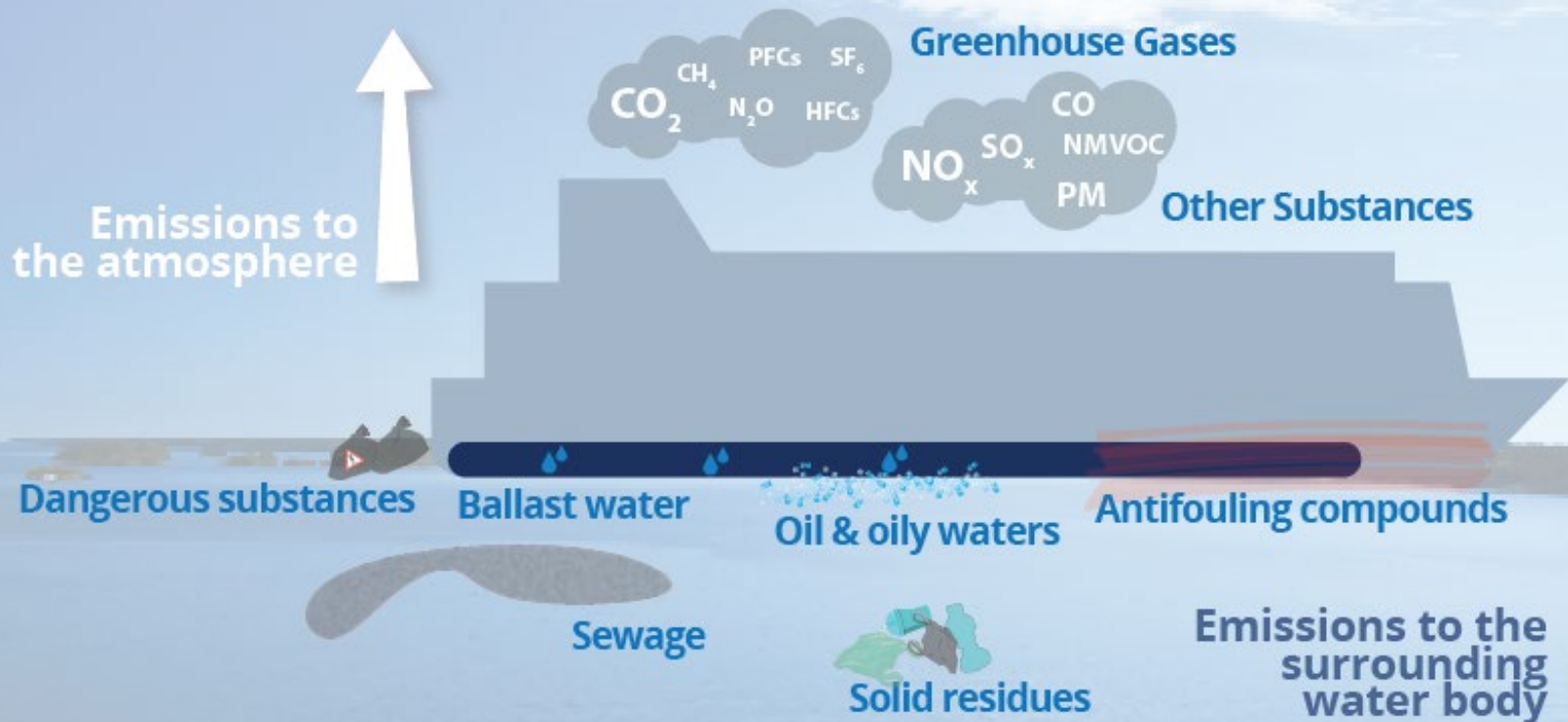


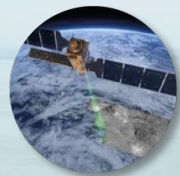
European Maritime Safety Agency



EUROPEAN MARITIME SAFETY REPORT 2022







2022

OIL SPILL
RESPONSE VESSELS |  10

OIL SPILL
RESPONSE VESSELS
WITH DISPERSANTS |  6

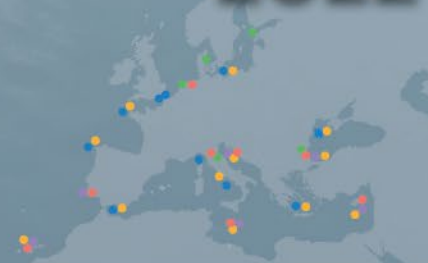
RPAS
ON BOARD OIL SPILL
RESPONSE VESSELS |  12

EQUIPMENT
ASSISTANCE SERVICE
(EAS) STOCKPILES |  5

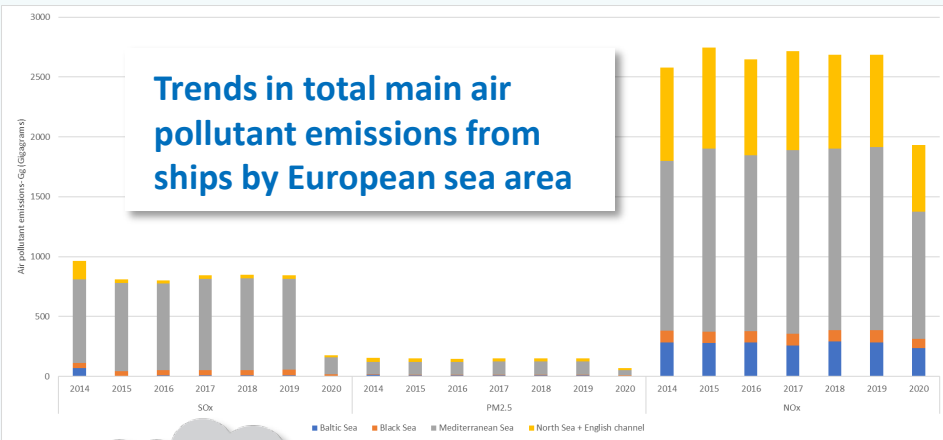
DISPERSANT
STOCKPILES |  8

CLEANSEANET
IMAGES |  1

24/7 SERVICE
AVAILABILITY |  24/7



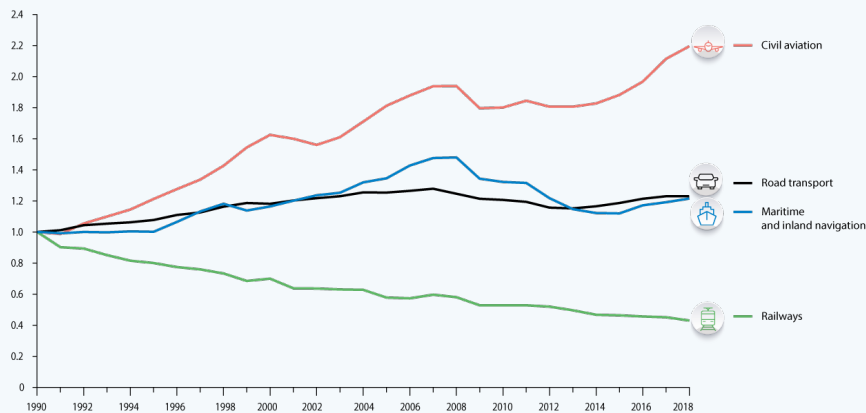
Trends in total main air pollutant emissions from ships by European sea area



Maritime Sector

CO₂ Emissions 2020
126 050 000 000
 metric tons

Index 1990=1



**EU GHG
 emissions from
 transport by
 mode, including
 international
 bunkers, relative
 to 1990**



EU targets on Climate change:

- **2030** - Reduce emissions by at least 55% when compared to 1990
- **2050** - Europe to become the world's first climate-neutral continent



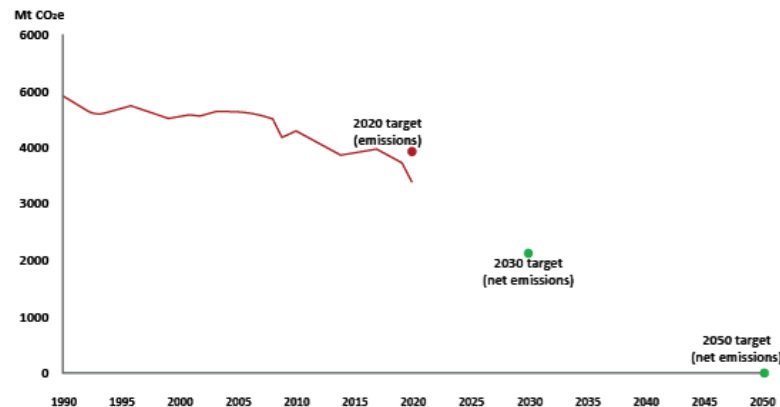
IMO GHG Initial GHG Strategy:

- **2050** – Reduce emissions by at least 50% compared to 2008
- **2050** – Possibly target net zero emissions from shipping (under discussion)



UN Sustainable development goals:

- climate action (SDG13),
- Life below water (SDG14),
- responsible consumption and production (SDG12) and clean water and sanitation (SDG6).



— Historical greenhouse gas emissions



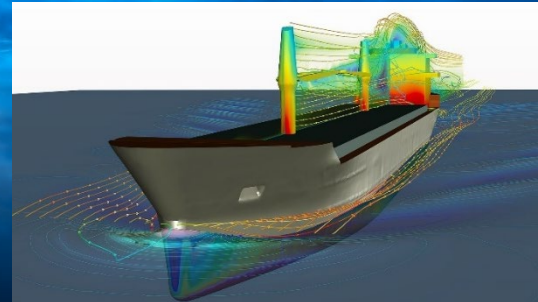
**Update on
potential of
Biofuels in
shipping**



**Potential of
Ammonia as
fuel in shipping**



**Guidance on
Shore-Side
Electricity**





- 
- The background of the slide is a photograph of a lighthouse on a rocky island at sunset. The lighthouse is on the left, with its light beam shining across the sky. Silhouettes of people are visible on the rocks in the foreground. A single bird is flying in the sky to the right.
- **Connecting Europe Facility for Transport** – 26 billion EUR
 - **Innovation Fund** – 38 billion EUR
 - **Horizon Europe** – 97 million EUR





Follow our activities on social media:



Navigating to 2050

A safe and sustainable maritime future

#NavigatingTo2050



Maja Markovčić Kostelac

Executive Director
European Maritime Safety Agency



Commissioners of
IRISH LIGHTS

Navigation
and Maritime
Services